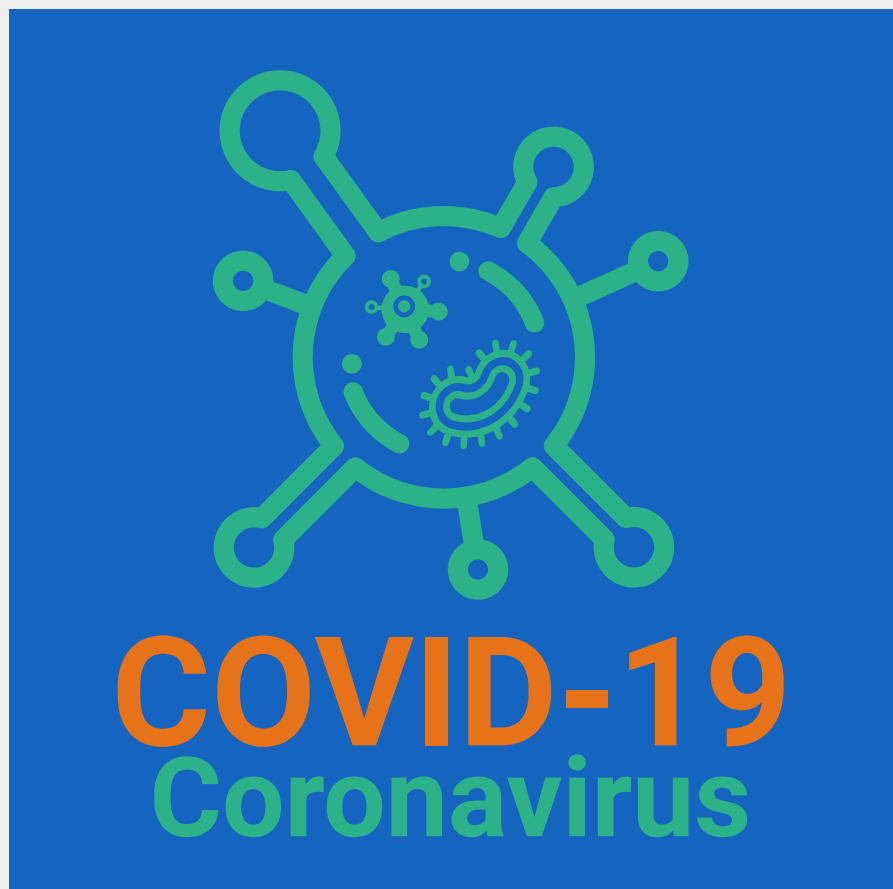
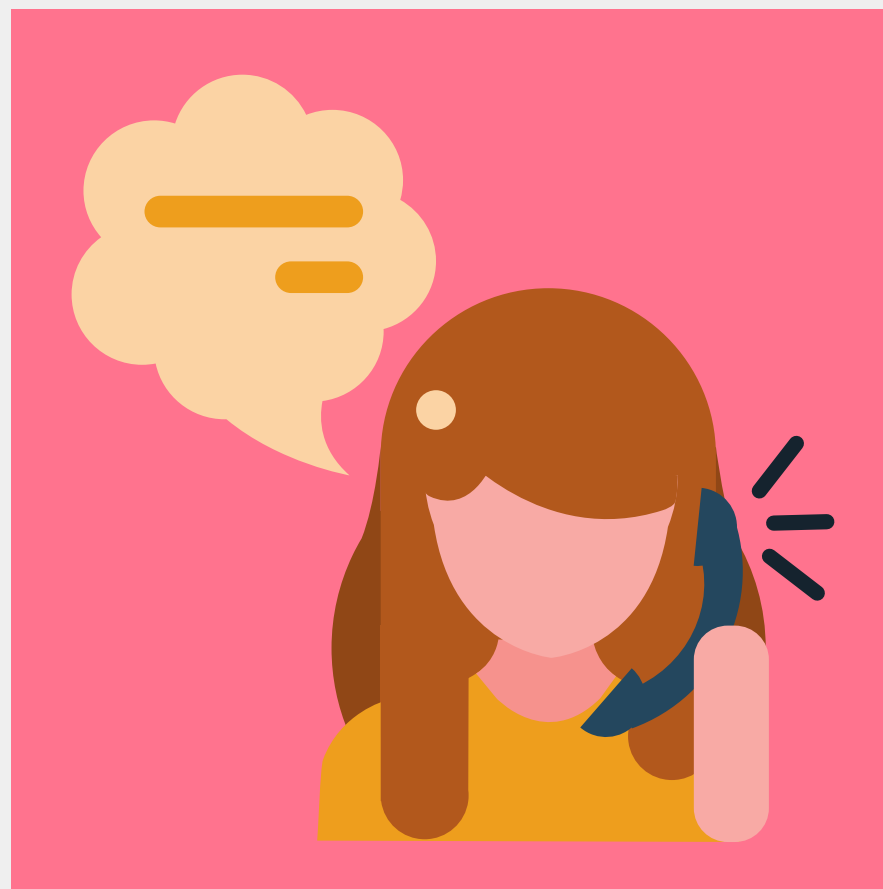


What to Expect When Getting the COVID-19 Vaccine



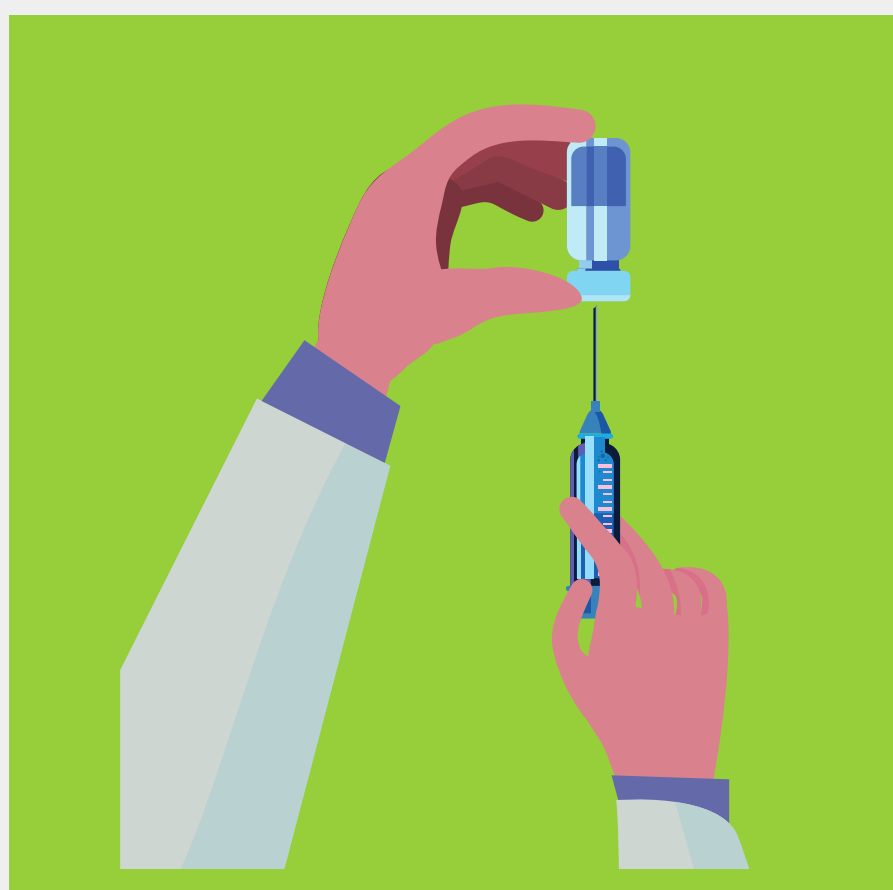
Even if you've had COVID-19, it is important to get the vaccine.



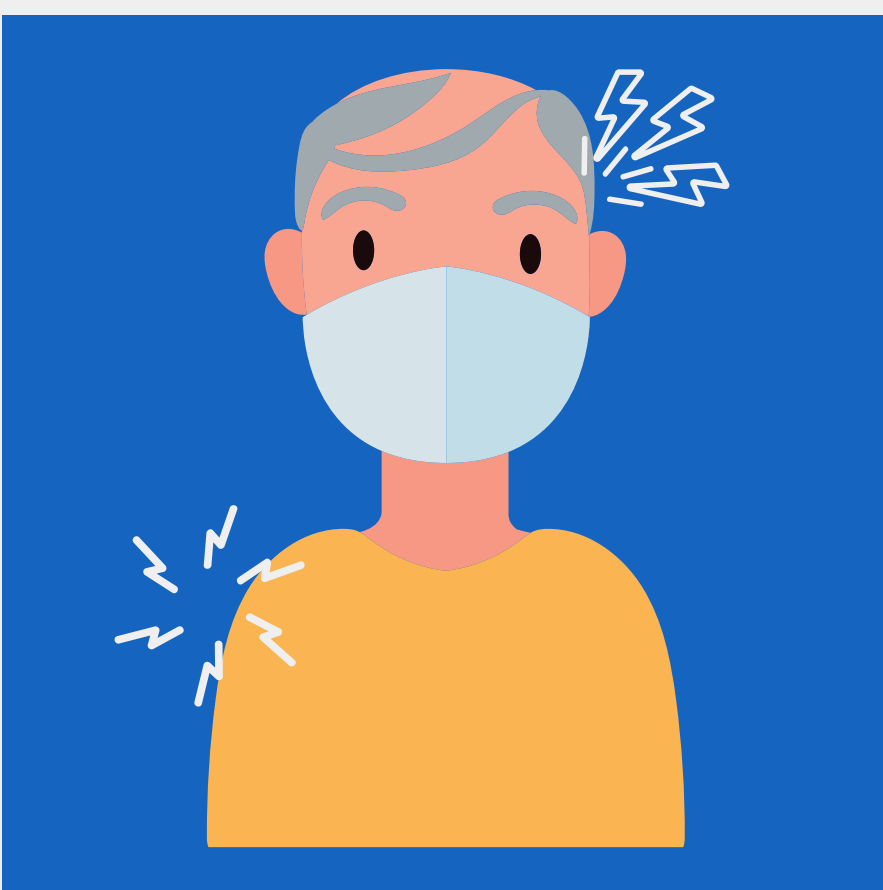
Schedule an appointment to get the vaccine.



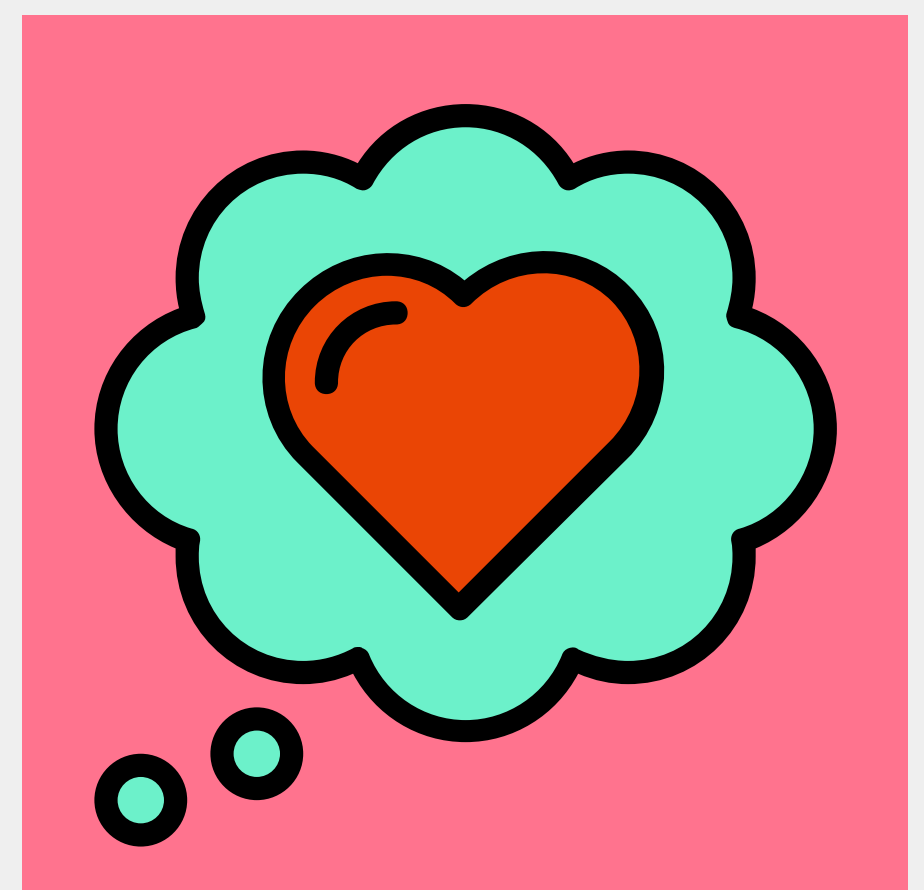
Make sure to arrive on time for your appointment.



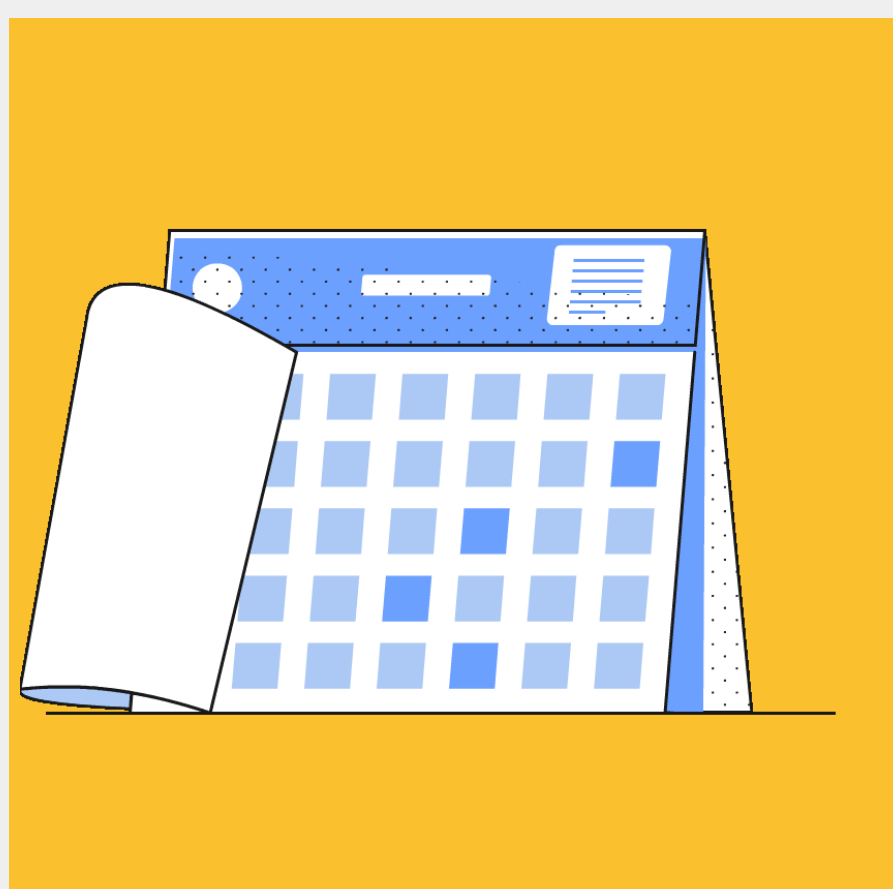
A medical personnel will administer the COVID-19 vaccine.



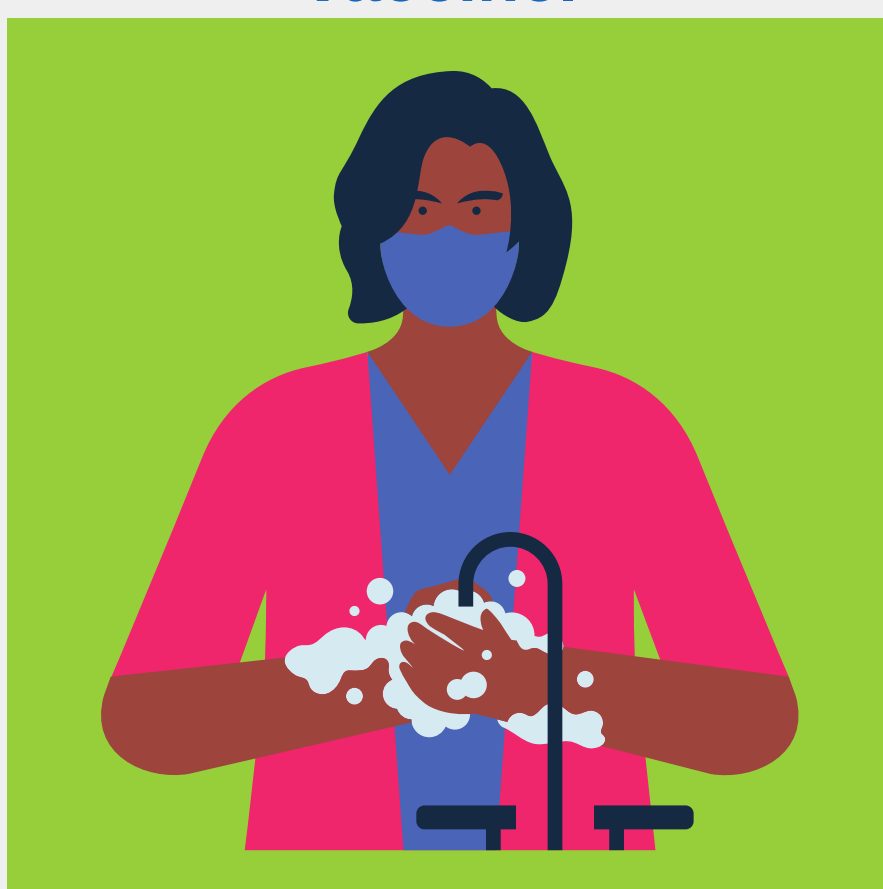
Your arm, where you received the vaccine, may be sore, or you might have a headache after receiving the vaccine.



You will start to feel better after a couple of days.



The next dose is required in 3-4 weeks. Make sure it is scheduled.

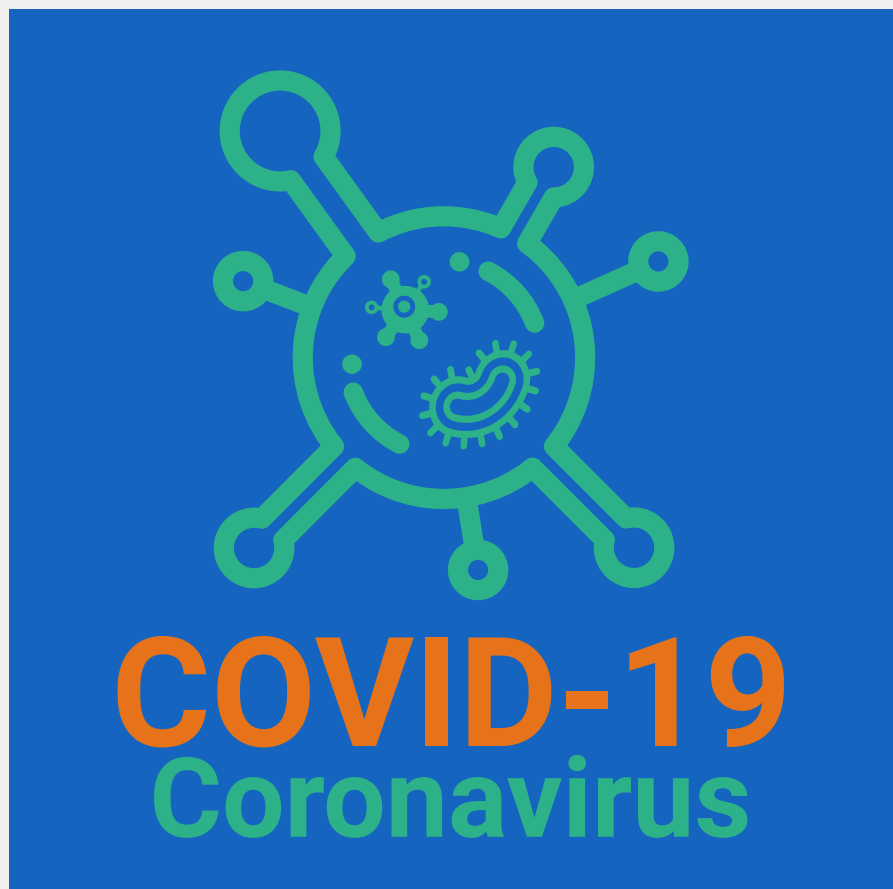


Continue to wear a mask, wash your hands, and maintain your distance.

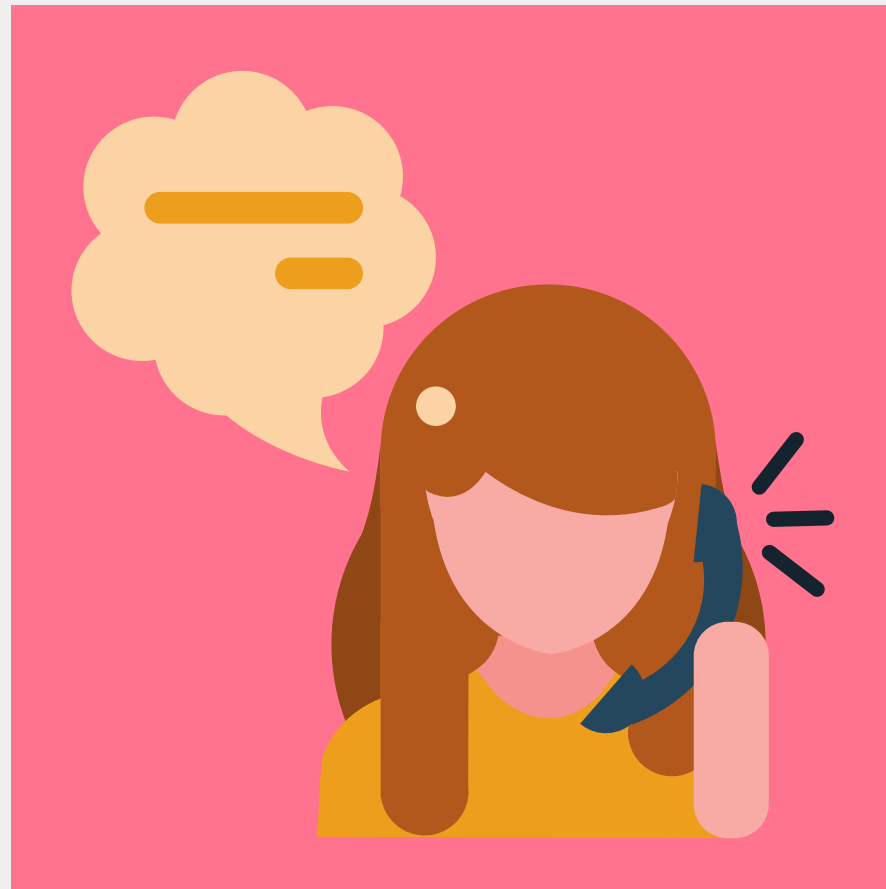


Congratulations, you did your part in keeping yourself and others safe!

Qué se puede esperar al ponerse la vacuna contra el COVID-19



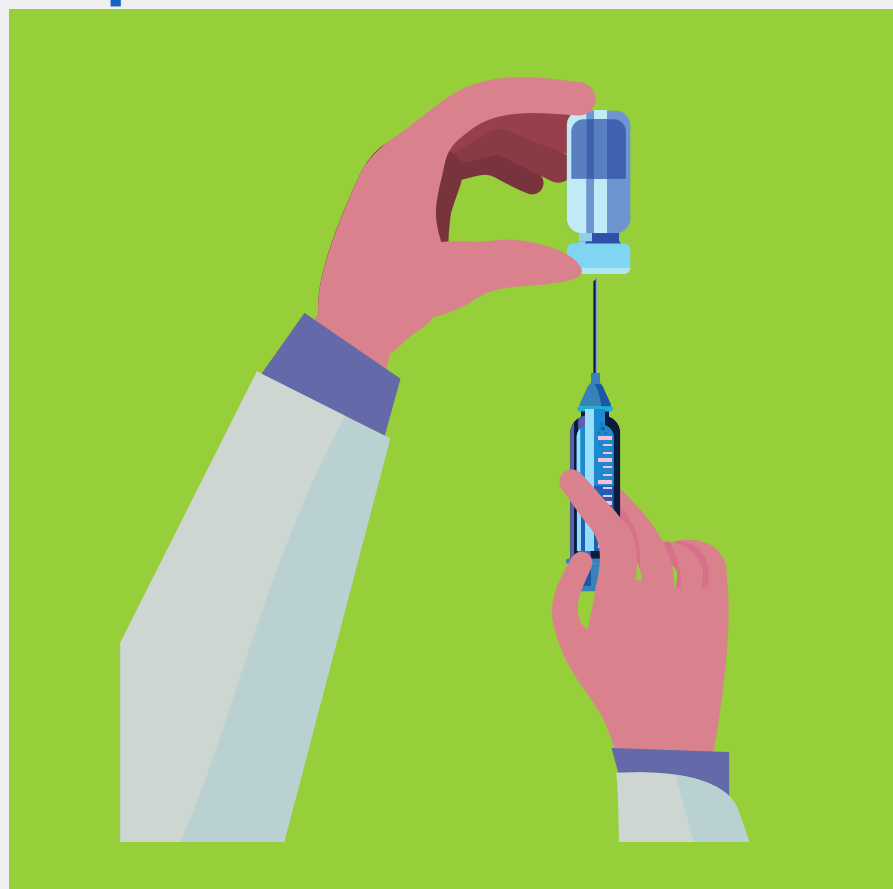
Aún si ha tenido COVID-19, es importante ponerse la vacuna.



Programe una cita para ponerse la vacuna.



Asegúrese de llegar a tiempo a su cita.



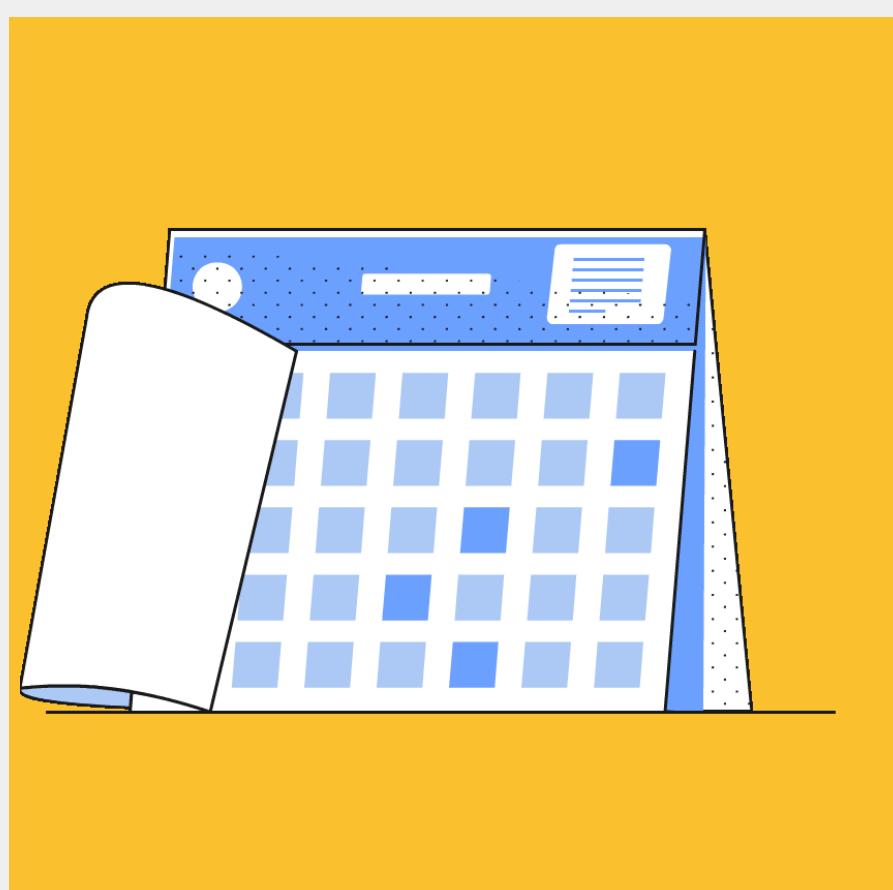
Un personal médico le administrará la vacuna contra el COVID-19.



Puede que le duela el brazo donde recibió la vacuna, o puede tener un dolor de cabeza después de recibir la vacuna.



Comenzará a sentirse mejor después de unos días.



La siguiente dosis es requerida dentro de 3 a 4 semanas. Asegúrese de que esté programada.

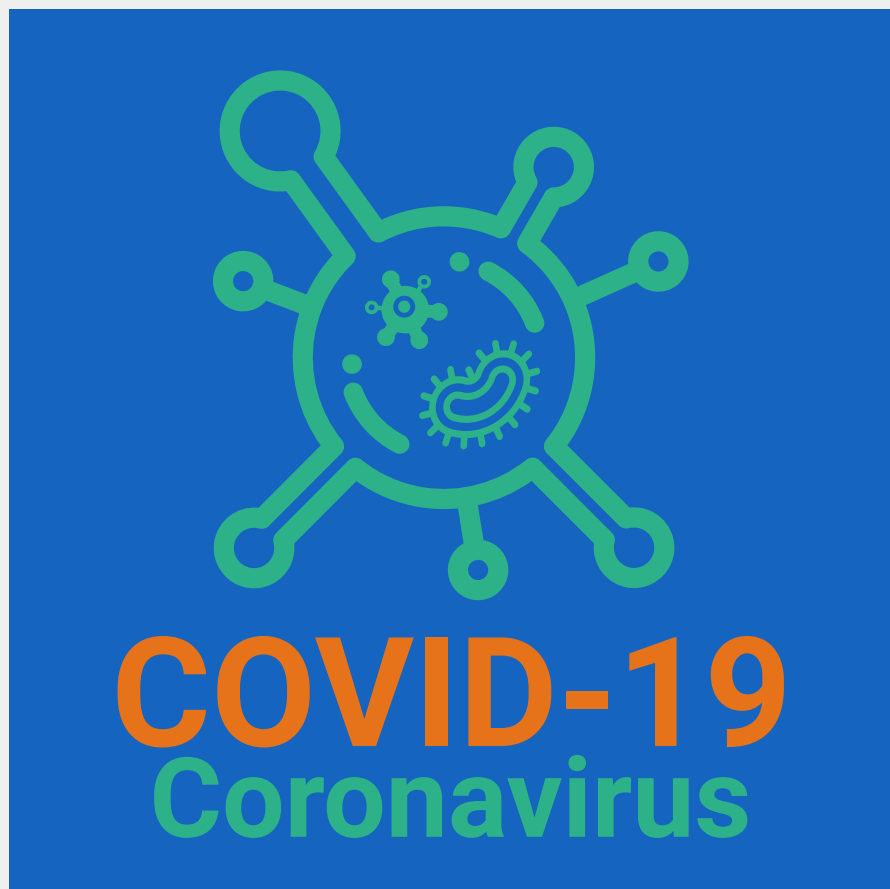


Continúe poniéndose la mascarilla, lavándose las manos, y manteniendo su distancia.

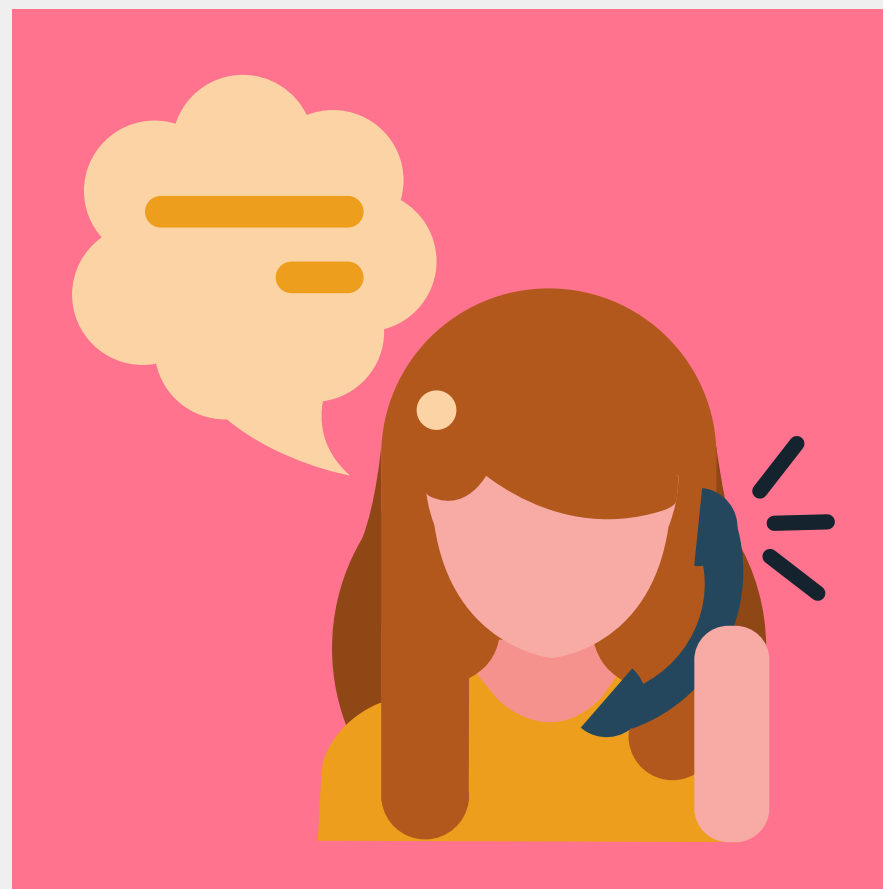


¡Felicitaciones, ya hizo su parte para mantenerse a usted y a los demás a salvo!

Kisa pou atann le ou ap resevwa vaksen COVID-19



Menm si ou te gen COVID-19, li enpotan pou jwenn vaksen an.



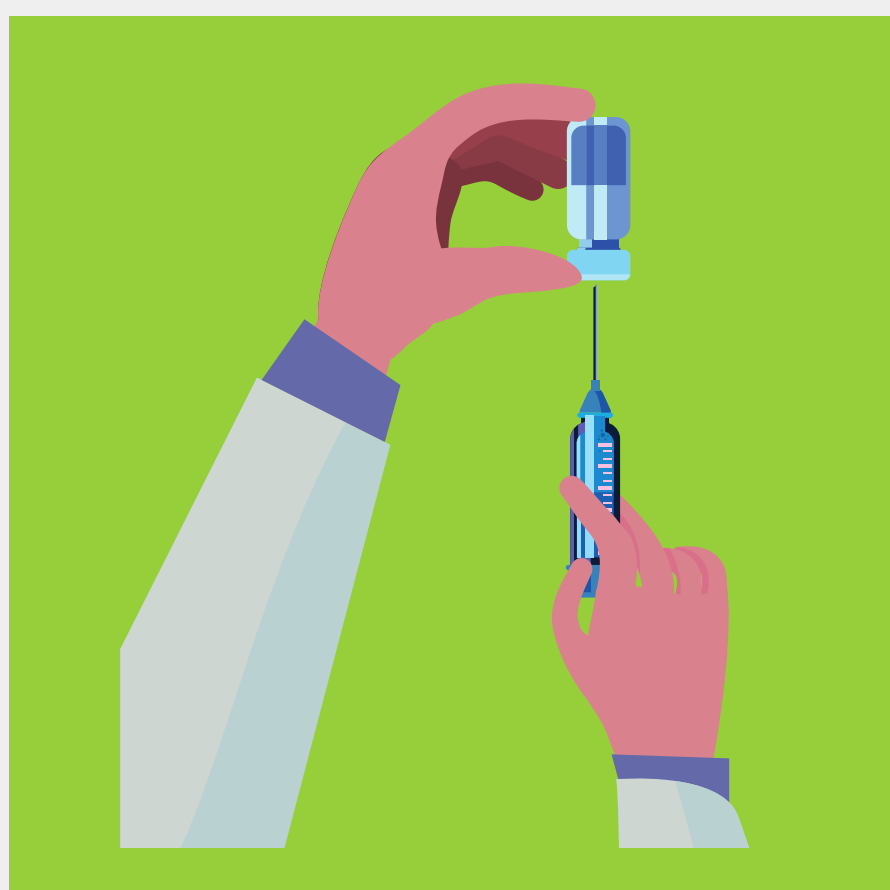
Ore yon randevou pou resevwa vaksen an.

Mete yon randevou pou resevwa vaksen an.



Asire ou ke ou jwenn la nan tan pou randevou ou.

Fè si ke w rive a lè pou randevou a



Yon anplwaye medikal ap ba ou vaksen COVID-19 la.

Yon anplwaye medikal ap ba ou vaksen COVID-19 la.

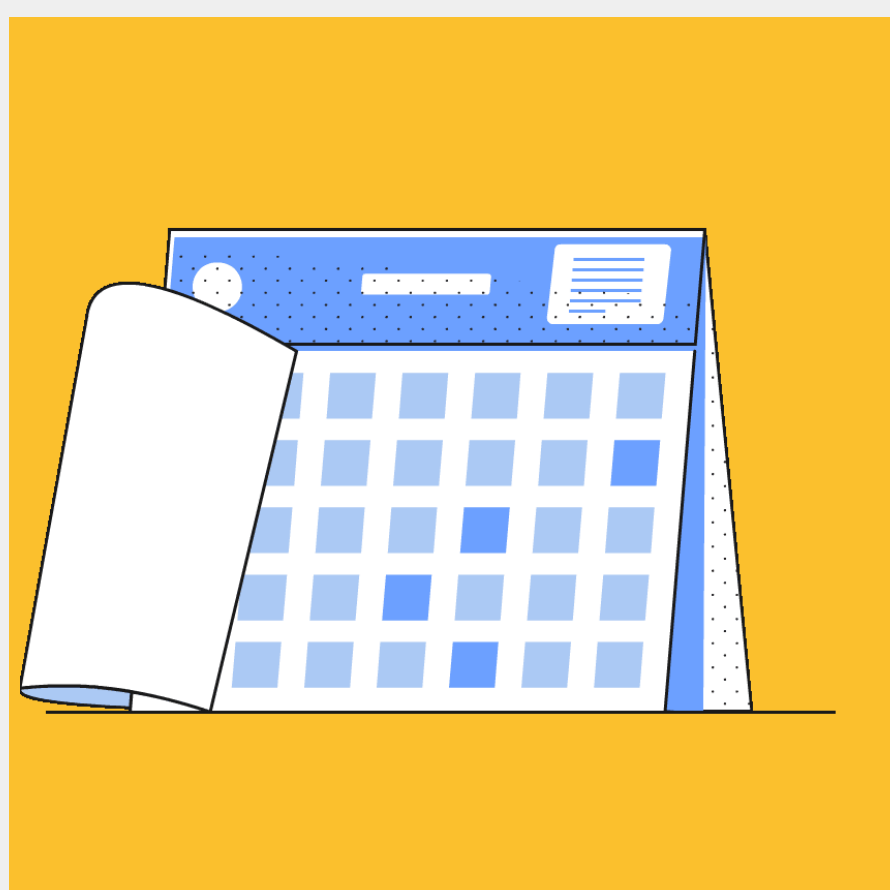


Bra ou kote ou te resevwa vaksen an ka blese, oswa ou ka gen yon maltet apre ou fin resevwa vaksen an.

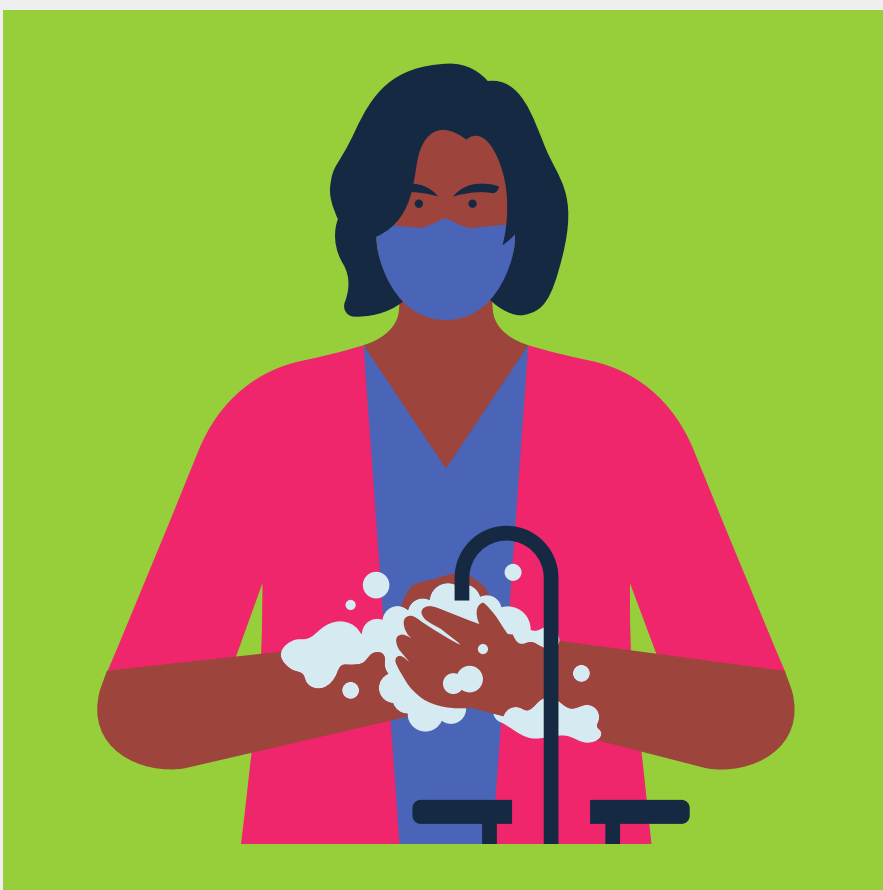
Bra kote w te resevwa vaksen an ka blese, oswa ou kab gen yon tètèr



Ou ap komanse santi ou pi bon apre kek jou.



Pwochen doz la se obligatwa nan 3 a semen 4. Asire ou ke li nan pwograme.



Kontinye sevi ak mask la lave men li ', li kenbe distans li.



Konpliman deja mete sou bo li 'yo rete ak lot moun san danje!